



NAVIGATIONAL
ECHO SOUNDER
SES-5000



- ✓ **10.4" WIDE COLOR LCD**
- ✓ **MAX,24HOURS LONG MEMORY**
- ✓ **ALARM FOR DESINATED DEPTH**
- ✓ **BUILT IN TERMAL PRINTER**
- ✓ **USER FRIENDLY MENU**



IMO STANDARDS MSC.74(69) ANNEX 4



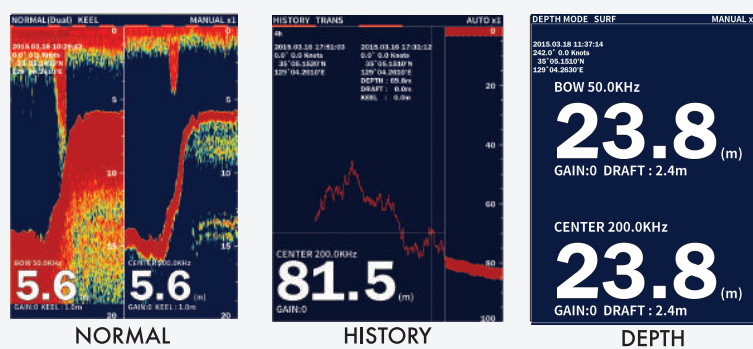
 **SAMYUNG ENC Co.,Ltd.**

Head Office : 69, Sangni-Ro, Youngdo-Gu, Busan, Korea, 606-083
Tel : 82-51-601-5530(Rep.) Fax : 82-51-413-4446

A/S Center : 1, Ilsanbong-Ro, Yungdo-Gu, Busan, Korea, 606-819
Tel : 82-1577-0198(ARS) Fax : 82-51-416-5515

FEATURES

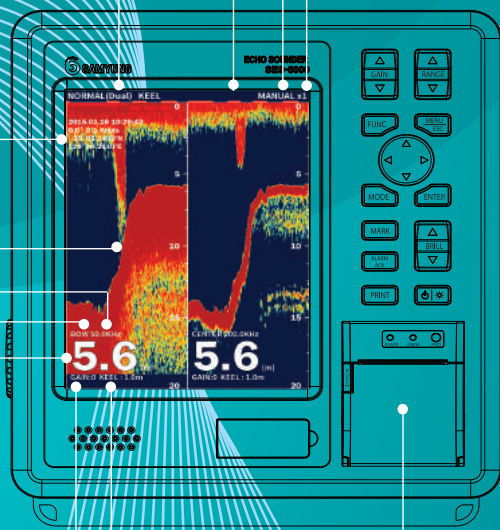
DISPLAY MODE



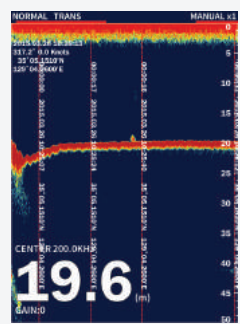
Select a desired screen mode.

SES-5000

Range mode
Display mode
Time bar
Display speed

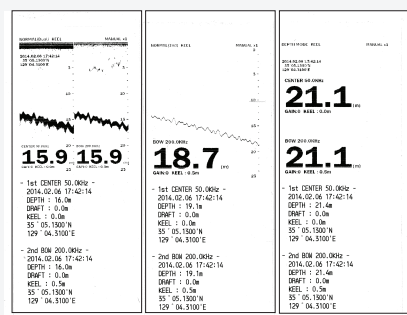


MARK



Mark lat/lon, time and location

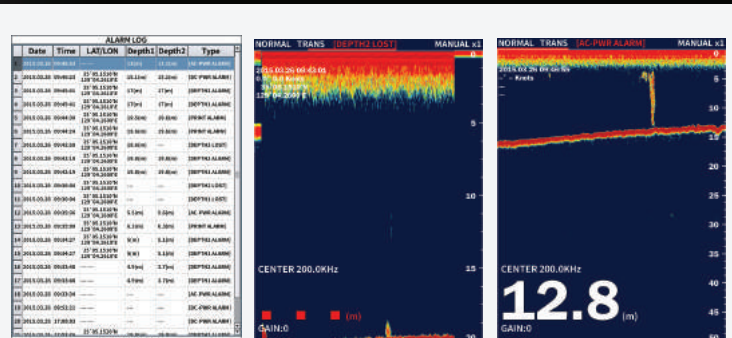
PRINTER



(Paper width : 57mm)

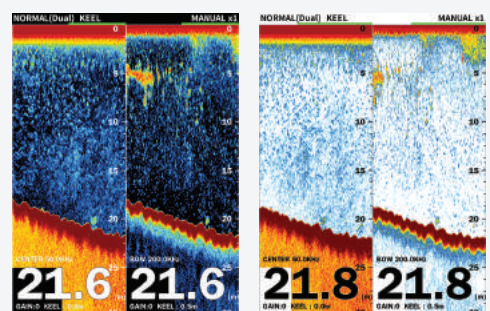
Print the data displayed on the current screen.

ALARM



ALARM LOG PRINTER ALARM AC POWER
Last 99memorized alarm logs display, last 20 memorized alarm log printed. When printer becomes abnormal, AC power failed alarm alerts.

BACKGROUND



BLACK WHITE
Change background color according to the surrounding environment.

Display

| | |
|-------------------------------|---|
| Display | 10.4 color LCD(600x800 pixel) |
| Frequency | 50KHz / 200KHz |
| Output Power | 1kw,1.5kw |
| Color | 8/16/64 colors, Background : Selectable among 5 colors |
| Range | 5,10,20,50,100,200,500,800,1000m |
| Depth accuracy | +2.5% |
| Minimum sounding depth | 50KHz : 1.7m, 200KHz : 0.6m |
| Draft | 0-50m |
| Display mode | Single, Dual, Replay, Depth |
| Screen speed | x4, x2, x1, x1/2, 1/4, 1/8, Stop |
| Alarm function | Depth, Power fail, System error |
| Auto display | Auto gain(fishing/sailing), Auto depth |
| Noise reduction | Off, Light, Medium, Strong or Frequency adjustment (Range depends o transducer) |
| Replay function(Data storage) | 24hrs(30secs save interval) |
| Time mark | 30secs |
| Software Version | 1.0.0 |

| | |
|-----------------------|--|
| Power supply | Main 100-230VAC, 50/60Hz ±5% Sub 22-30VDC |
| Operation environment | Temperature : Main equipment -15°C - +55°C Humidity : Less than 93% (+30°C - +60°C) |

Interface

| | |
|---------------------|---|
| Number of port | NMEA0183 VER1.5/2.0/3.0(I/O)-2port |
| Input data | GGA, VTG, ZDA |
| Output data | DBT, DBS, DPT, GGA, GLL, GSA, GSV, VTG, ZDA |
| Output alarm signal | Depth, Power fail, System error |

COMPONENT

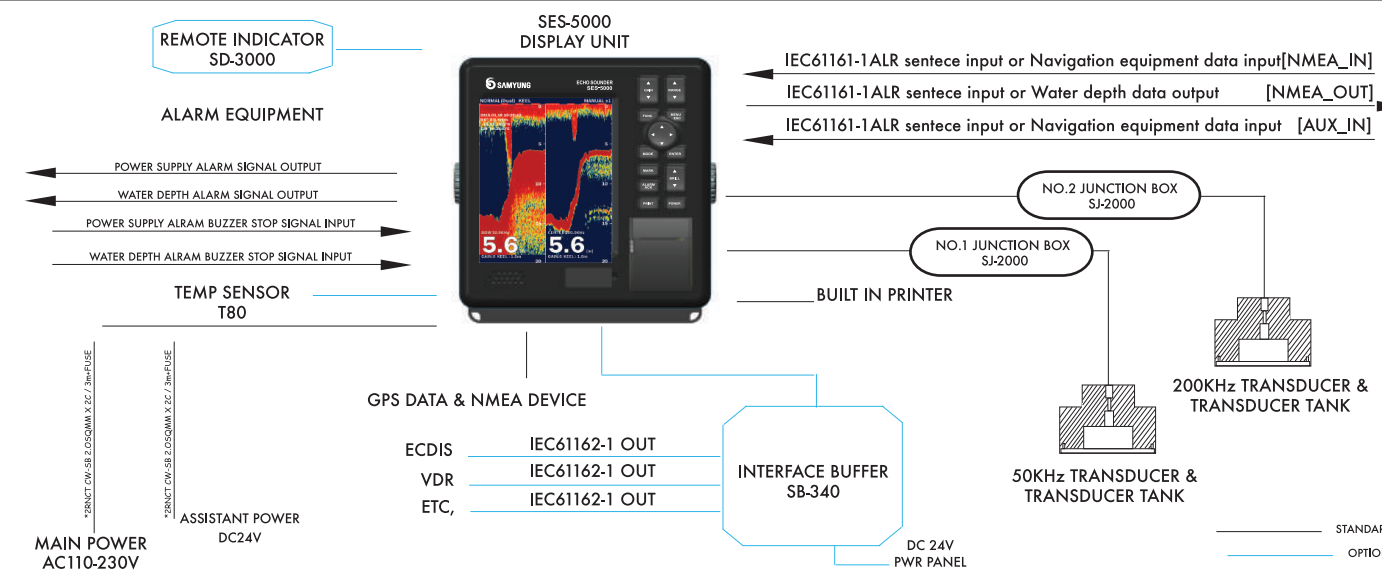
Standard

| | |
|------------------|----------|
| Main unit | SES-5000 |
| Installation set | |
| Manual | |

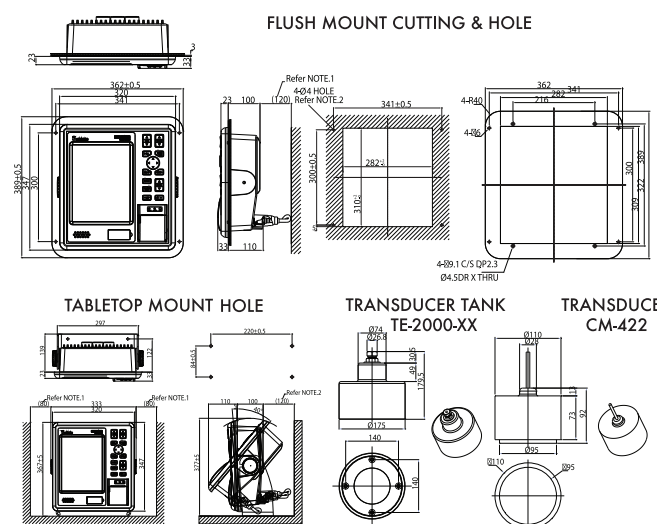
Option

| | |
|-------------------|------------|
| Interface unit | SB-340 |
| Water temp sensor | T80 |
| Depth indicator | SD-3000 |
| Dimmer controller | DM-3001 |
| Transducer tank | TE-2000-XX |
| Junction box | SJ-2000 |

DIAGRAM



INSTALLATION



DIMENSION

